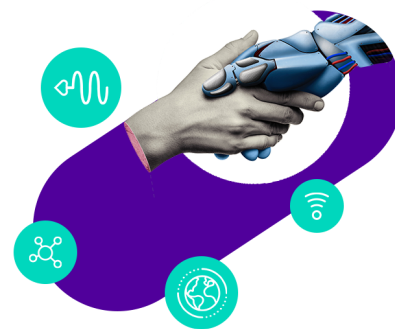


Operator Connect



Benefits

✔ Maintain existing contracts

You can continue with your existing contracts and relationship with Colt while enabling calling on Teams.

✔ Reduced infrastructure and management costs

Accelerated and simplified managed PSTN calling in Teams but without the need to host any hardware on-premises or in a data centre.

✔ Simple set up and management

All in one place directly through the Teams Admin Centre.

✔ Reliability

Enhanced reliability and quality of service.

Operator Connect for Microsoft Teams

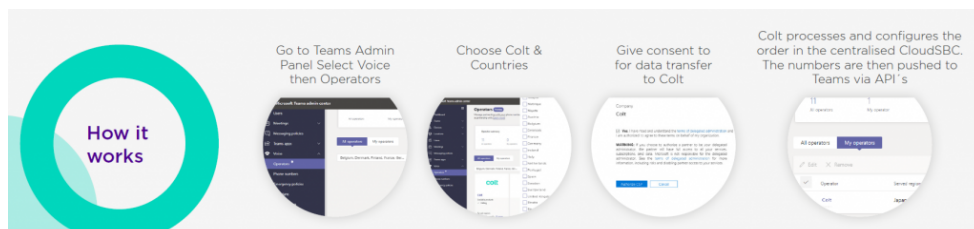
Bringing PSTN calling to Microsoft Teams

Colt and Microsoft have been working closely to offer our customers a best-in class and modern calling experience underpinned by agile, high bandwidth connectivity with Operator Connect from Colt you can benefit from flexible and competitive calling tariffs and a single provider for multi-country coverage along with simple setup and management, reduced infrastructure and management costs, enhanced support and reliability all through your Teams Admin portal.

What is Operator Connect

Microsoft Operator Connect is a new operator-managed service that brings PSTN calling to Teams. It allows you to acquire Colt's enterprise-grade Cloud Voice Services directly through Teams with a fully managed and integrated experience including:

- Increased technical support from the resources of both Colt and Microsoft
- Quality service level agreements
- Enhanced reliability through direct peering powered by Microsoft Azure which creates a 1:1 network connection, exchanging traffic directly between networks



Why Operator Connect

Coverage

- Extensive coverage in 20 European countries.

Regulatory Compliance

- Regulatory Compliance in all our geographic regions, saving you time and complexity.

Performance

- Guaranteed High Level performance.

Flexible

- Flexible and scalable tariffs.

Simple

- Simple procurement and no on site intervention.

One Stop Shop

- A single point of contact and contract across all Colt voice countries.

Security

- The highest degree of security, led by our expert cybersecurity team.

Support

- 24 x 7 end to end support.